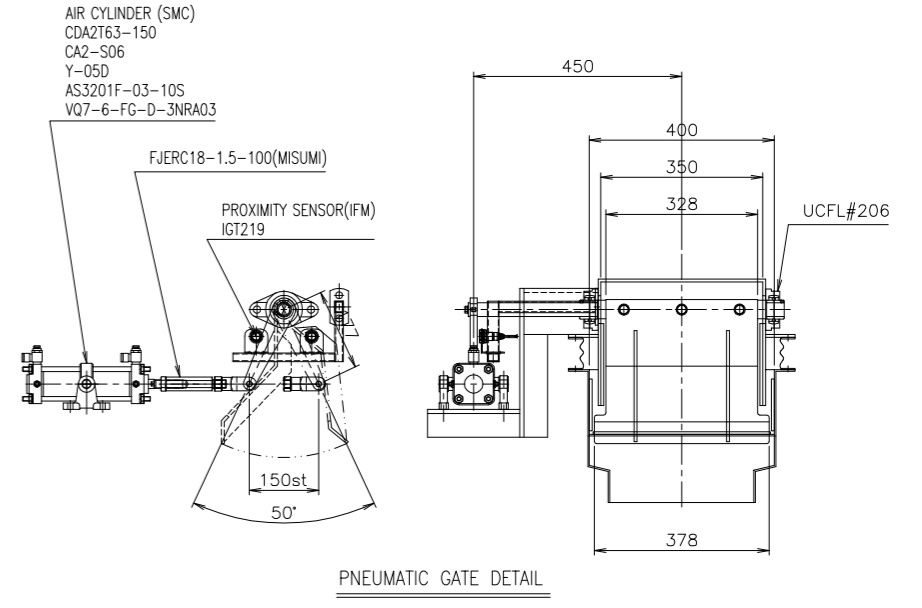


NO.	DESCRIPTION	MATERIAL	UNIT	Q'TY	WEIGHT(KG)		REF. DWG. NO.	REMARKS
					UNIT	TOTAL		
01	TROUGH	SS275		1		35		3.2t
02	YOKE	SS275		2		10		6t
03	SKIRT	SS275		1		60		6t
04	DRIVE UNIT		SET	1		370		
05	LINER	AR400		1		22		6t
06	SKIRT LINER	AR400		1		20		6t,10t
07	SPRING UNIT(DRIVE)	SS275	SET	2				
08	SPRING UNIT(TROUGH)	SS275	SET	2				
09	FLAP GATE	SS275	SET	1		40		
10	SLIDE GATE	SS275	SET	1				

APP.560Kg

MATERIAL SPEC.						
ITEM NO.	HOPPER NO	MATERIAL	B/D	SIZE(MM)	CAPACITY(m3/hr)	REMARKS
		-	-	-	40	

VIBRATING FEEDER SPEC.		PAINTING SPEC.	
MODEL	F-33BDT	SURFACE	Sa 2 1/2
VOLTAGE(V)	440V	INTERNAL	UNDER COATING : I.Z.P 75um
FREQUENCY(Hz)	60	EXTERNAL	UNDER COATING : I.Z.P 75um
VIBRATION(VPM)	3600		INTERMEDIATE : EPOXY M.I.O 75um
CURRENT(A)	5		TOP COATING : ACRYLIC URETHANE 40um
VIBRATION ANGLE(°)	25	D/UNIT	MAKER STANDARD
STROKE(mm)	Max. 1.5	COLOR	MUNSELL NO. 2.5G 6/2
Q'TY	1 SETS		



posco										SCALE	1/8	PROJECTION	
										SIZE	A1	DIMENSION	mm
TITLE										STX 4#강 PLANT		ELECTRO-MAGNETIC VIBRATING FEEDER ASSEMBLY	
										FACILITY		F-33BDT-UC104011-S	
No. Date										DRAWN		EQUIPMENT	
FOR APPROVAL										CHECKED		MAKER	
Revisions & Description										REVIEWED		DWC. NO.	
										APPROVED		F-33BDT-UC104011-S-A	
SHINWHA Electric Co., Ltd.										DRAWN		POSICO DWG. NO.	
posco 포스코										CHECKED			
										REVIEWED			
										APPROVED			
										DATE			
										DRAWN		JUNG	
										CHECKED		LEE	
										REVIEWED		HONG	
										APPROVED		SONG	
										DATE		'24.03.13	